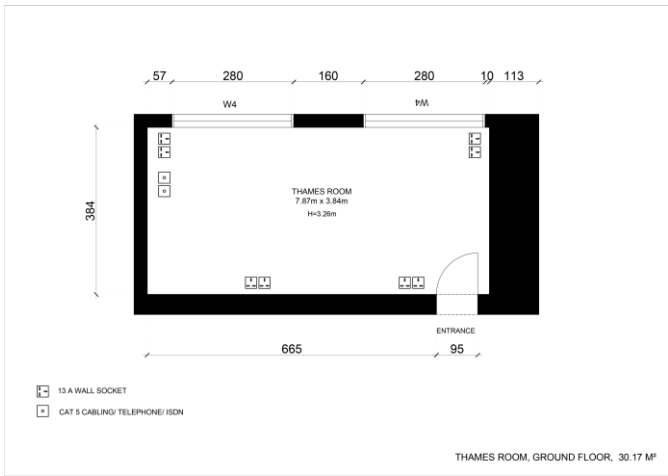


The Thames Room presents fantastic views of the City and River Thames. this space provides the perfect anteroom for the Bridge Room or as a breakout space in conjunction with the rest of the venue.



AUDIO VISUAL EQUIPMENT

PROJECTOR AND SCREEN
STAGING
100MB FIBRE OPTIC BROADBAND

CAPACITY

THEATRE STYLE	28
DINNER	20
BOARDROOM	16
STANDING RECEPTION	30